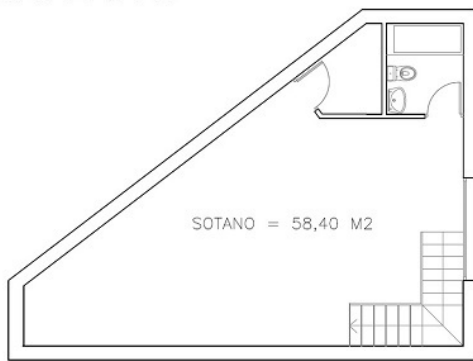
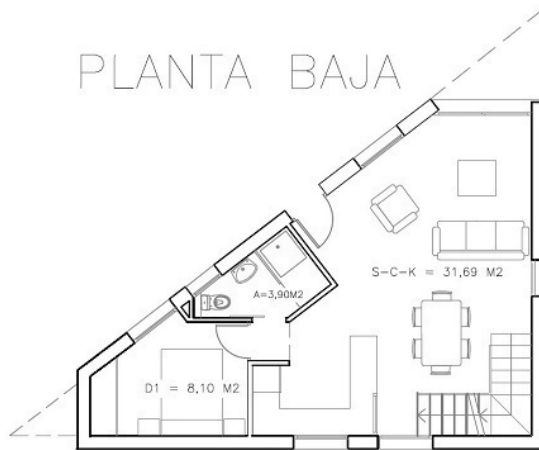


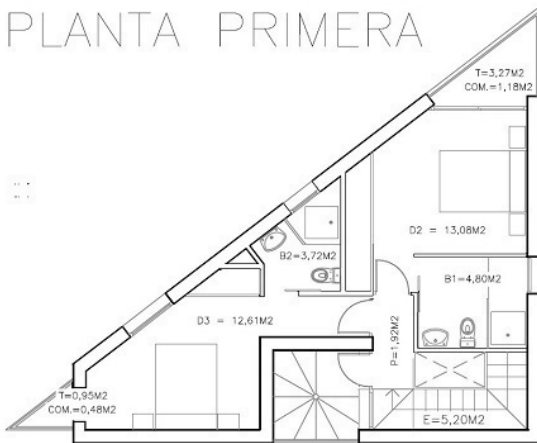
## SOTANO



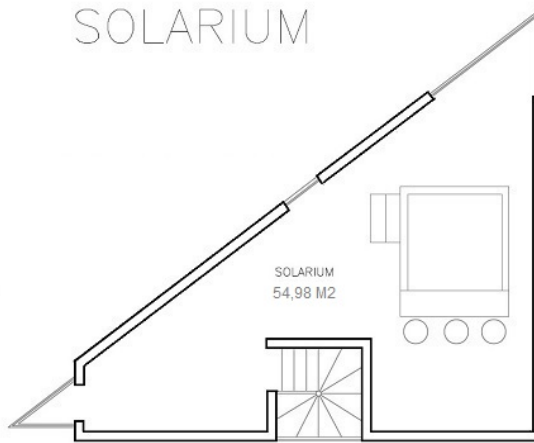
## PLANTA BAJA



## PLANTA PRIMERA



## SOLARIUM

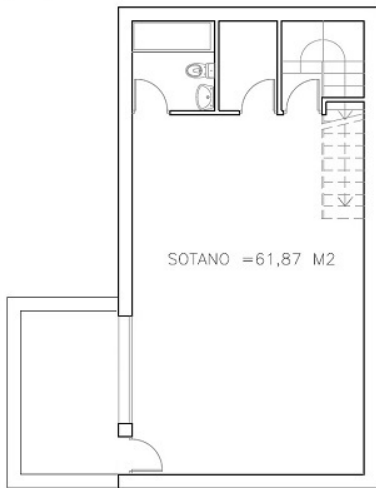


### VIVIENDA 1

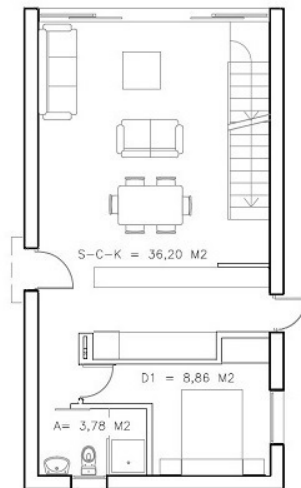
Planta Baja +  
Planta alta ..... 117,20 m2  
Planta Semi-Sótano ..... 58,40 m2  
Solárium ..... 58,98 m2  
**TOTAL m2 construido... 230,58 m2**

**Sup. PARCELA ..... 167,78 m2**

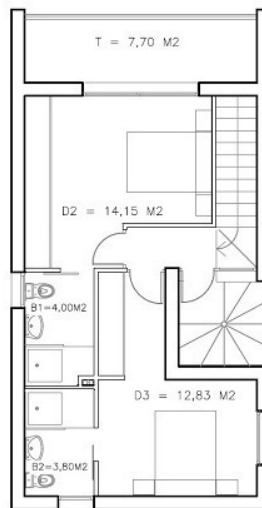
## SOTANO



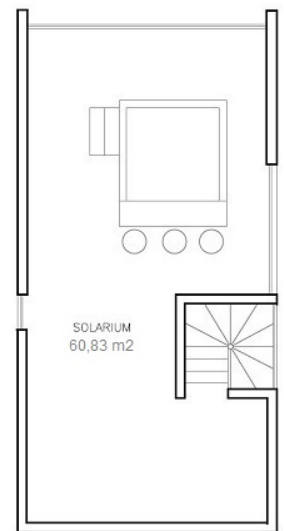
## PLANTA BAJA



## PLANTA PRIMERA



## SOLARIUM



VIVIENDA 2

Planta Baja + Planta Alta.....	122,05 m2
Planta semi-sótano .....	61,87 m2
Solárium .....	60,83 m2
<b>TOTAL m2 construidos .....</b>	<b>244,75 m2</b>

Sup. PARCELA ..... 232,30 m2